

# Christie Spyder X80

80 megapixel, true 4K@60Hz  
performance across multiple displays

Auditoriums

Broadcast studios

Conference rooms

Control rooms

Corporate lobbies

Houses of worship

Live events staging

Media centers

Post-production

Sports venues



Christie®, the undisputed leader in multi-window processing, is again setting the standard with the all-new Christie Spyder X80. Create spectacular experiences with unprecedented 80 megapixel processing power in true 4K@60Hz across multiple displays. As the next-generation Spyder - the tool trusted by professionals for the most demanding applications - the Christie Spyder X80 enables the creation of spectacular, never-before-seen visual experiences.

**CHRISTIE®**

## Technical specifications

Inputs	number	Up to 6 input modules each with 4 inputs User may define the amount of modules required from 1 to 6
	signals	Each input supports 3 connections DisplayPort 1.2 • HDMI 2.0 • 12G-SDI
	resolutions	Horizontal up to 4096 and vertical up to 2400 within pixel clock
	scan rates	Up to 120Hz dependant on pixel clock rate maximum
	bit depth	Support for 8/10/12
	frame lock	Via a dedicated BNC. Passive black burst loop or tri level signals
	Outputs	number
signals		Each output supports 3 connections DisplayPort 1.2 • HDMI 2.0 • 12G-SDI
resolutions		Horizontal up to 4096 and vertical up to 2400 within pixel clock
scan rates		Up to 120Hz dependent on pixel clock rate maximum
bit depth		Support for 8/10/12
Control and networking		RS-232 in/out Ethernet (10/100/1000)
Accessories	standard	User manual (USB drive) • 4 AC power cords Christie Spyder Studio software • Rack hardware
	optional	Dust filters
Enhanced features	Independent aspect ratio and frame rate setup • Overlays Transitions • Aspect ratio conversions • Integrated source monitoring Output rotation (portrait) • Optional stereoscopic support <sup>1</sup> HDCP support • 2D and 3D capabilities	
Power requirements (fully loaded)	operating voltage	90-264 VAC @ 50/60Hz
	operating current	14A max
	power	1680W
Physical	space required	6RU
	size	(LxWxH): 23.54 x 17.36 x 10.28" (598 x 441 x 261mm)
	shipping size	(LxWxH): 30.94 x 23 x 16.3" (786 x 584 x 414mm)
	weight	79.75lbs (36.17kg) - fully loaded
	shipping weight	109.1lbs (49.49kg) - fully loaded
Operating environment	Temperature: 40-95°F (5-35°C) Humidity: 20-80% non-condensing	
Warranty	Two years parts and labor Contact an authorized Christie representative for full details of our limited warranty	

# Christie Spyder X80

Featuring processing and connectivity capabilities that surpass anything else in the market, the Spyder X80 is the most powerful multi-screen windowing processor and content management solution available. Engineered with direct feedback from users, the Spyder X80 is built specifically for applications requiring a massive volume of pixels from source to display with the highest level of performance, flexibility and functionality possible.

## Features

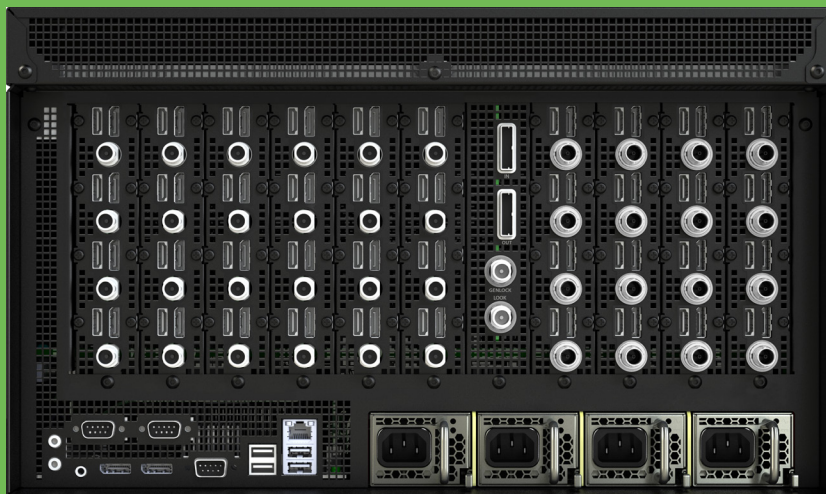
- › Single-cable 4K@60Hz support on every channel
- › Multiple sources and displays
- › Super-fast still loading for backgrounds and as source content
- › User-defined color bit depth. 80 megapixel bandwidth at 8 bit and 53 megapixel at 12 bit
- › Extremely low latency with powerful universal switching built-in, cross point hardware for fast switching and maximum input/output routing capability with no additional signal latency
- › Redundant hot swappable power supplies
- › Spyder Studio client software allows offline editing to configure and program without the need of hardware
- › Christie® Widget Designer integration to create dedicated user interfaces and interaction logic to easily manage installations
- › Customizable multi-viewer output(s) arranges sources, display areas, program and preview for real-time monitoring
- › Intelligent EDID Manager with custom creation of user-defined resolutions, ensures adaptability across intuitive graphical user interface (GUI)

## Functionality

- › Seamless management of multiple SD, HD, 4K and stereoscopic workflows simultaneously
- › External matrix switching supports a wide range of manufacturers
- › Built-in conversion for interlaced signals, resolutions, aspect ratio and refresh rates
- › User-defined edge blending and tiling
- › Window border and drop shadow creation with adjustable color, width, softness, shadow offset and transparency
- › Online editing mode to preset scenes to be built and edited in preview mode without affecting what the audience is seeing
- › Advanced auto-sync functionality
- › External control support of the optional Christie Montage II console, Shot Boxes, and other third-party controllers and interfaces



› Bitmap borders

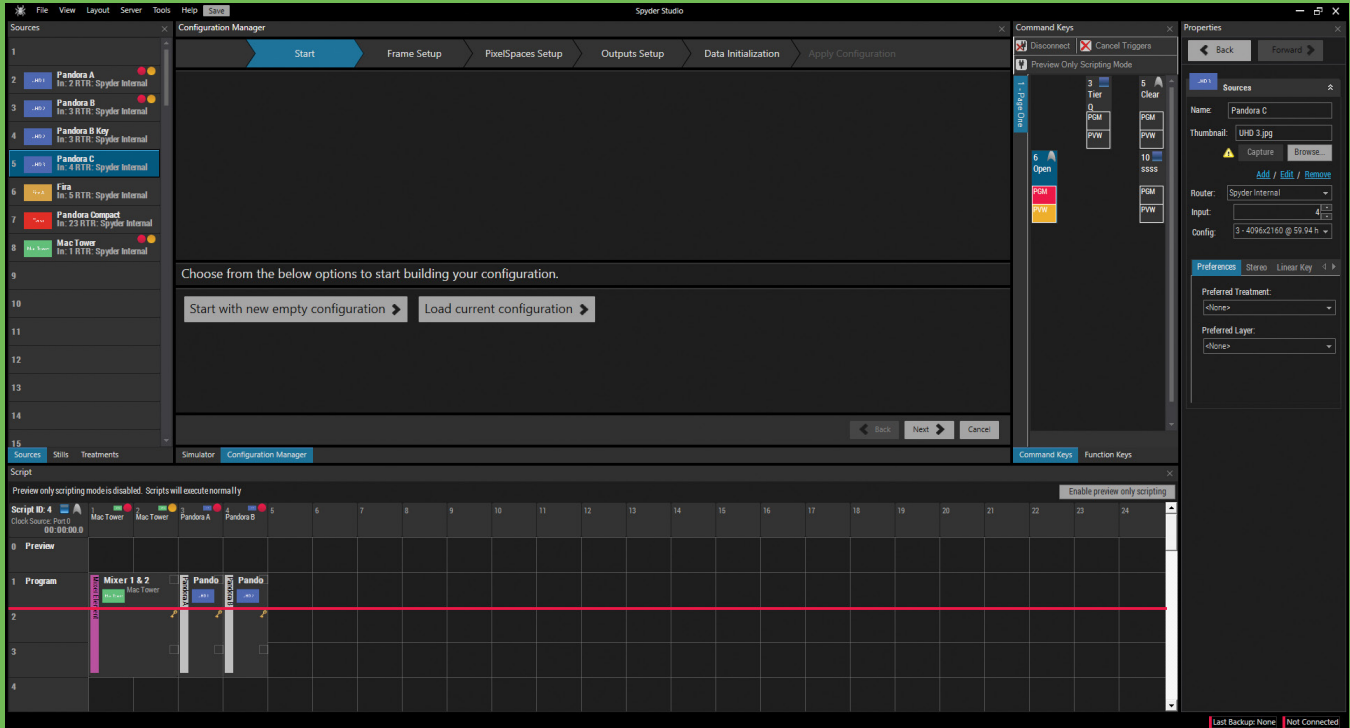


## Connectivity

- › Flexible, scalable and customizable I/O configurations with card slot design
- › Each channel = 4K support reducing the need for additional channels and cables
- › Universal input/output capabilities - mix and match multiple formats with single point processing
- › Manages and displays multiple 3D and 2D sources simultaneously (with optional stereoscopic license)
- › Each output individually supports rotation - enabling the creation of vertically-orientated display
- › HDCP 2.2 support for compliance with latest in digital copy protection
- › Every input = HDMI 2.0, DisplayPort 1.2 and 12 G-SDI connections

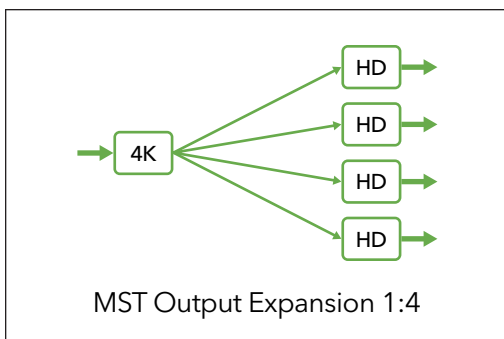
## Industrial design color LCD display

- › Status and display design
- › Smart keyboard functionality, programmable to recall test patterns and diagnostics and more
- › Thumbnail video display keys
- › Context sensitive, programmable
- › User configurable
- › A web browser can be used to show status and logs, upload new firmware, trigger presets, and more<sup>2</sup>



## MST support on DisplayPort outputs<sup>3</sup>

Easily and simply expand any 4K output into as many as 4x individual HD streams. Uses off-the-shelf MST technology.



## Graphic user interface/client software

Single control point for all processing and signal distribution functions from PC client software via Ethernet, or external control system.

**Spyder Studio** is a Windows-based, client software (GUI) interface that makes it easy to configure and control the Spyder X80 in real time. From simple presets to complex frame-accurate timelines, Spyder Studio has the flexibility and functionality required for the most demanding live environments. Spyder Studio can be used off-line allowing the user to completely configure and program the X80 conveniently without hardware present. Backup and restore files allow configuration and programming protection along with easily repeating future configurations.

<sup>1,3</sup> Future release. <sup>2</sup> Not a replacement of the client software.

#### Corporate offices

---

Christie Digital Systems USA, Inc.  
Cypress  
ph: 714 236 8610

Christie Digital Systems Canada Inc.  
Kitchener  
ph: 519 744 8005

#### Independent sales consultant offices

---

Italy  
ph: +39 (0) 2 9902 1161

Russia  
ph: +7 (495) 930 8961

#### Worldwide offices

---

Australia  
ph: +61 (0) 7 3624 4888

Brazil  
ph: +55 (11) 2548 4753

China (Beijing)  
ph: +86 10 6561 0240

China (Shanghai)  
ph: +86 21 6278 7708

Columbia  
ph: +57 (318) 447 3179

Eastern Europe  
ph: +36 (0) 1 47 48 138

France  
ph: +33 (0) 1 41 21 44 04

Germany (Cologne)  
ph: +49 221 99 512-0

Germany (Moechengladbach)  
ph: +49 2161 566200

India  
ph: +91 (080) 6708 9999

Japan  
ph: +81 3 3599 7481

Mexico  
ph: +52 55 4744 1790

Republic of South Africa  
ph: +27 11 251 0000

Singapore  
ph: +65 6877 8737

South Korea  
ph: +82 2 702 1601

Spain  
ph: +34 91 633 9990

United Arab Emirates  
ph: +971 (0) 4 503 6800

United Kingdom  
ph: +44 (0) 118 977 8000

United States (Arizona)  
ph: 602 943 5700

United States (New York)  
ph: 646 779 2014



For the most current specification information, please visit [www.christiedigital.com](http://www.christiedigital.com)

Copyright 2017 Christie Digital Systems USA, Inc. All rights reserved. All brand names and product names are trademarks, registered trademarks or tradenames of their respective holders. Christie Digital Systems Canada Inc.'s management system is registered to ISO 9001 and ISO 14001. Performance specifications are typical. Due to constant research, specifications are subject to change without notice.  
Printed in Canada on recycled paper. 4587 Nov 17

**CHRISTIE®**